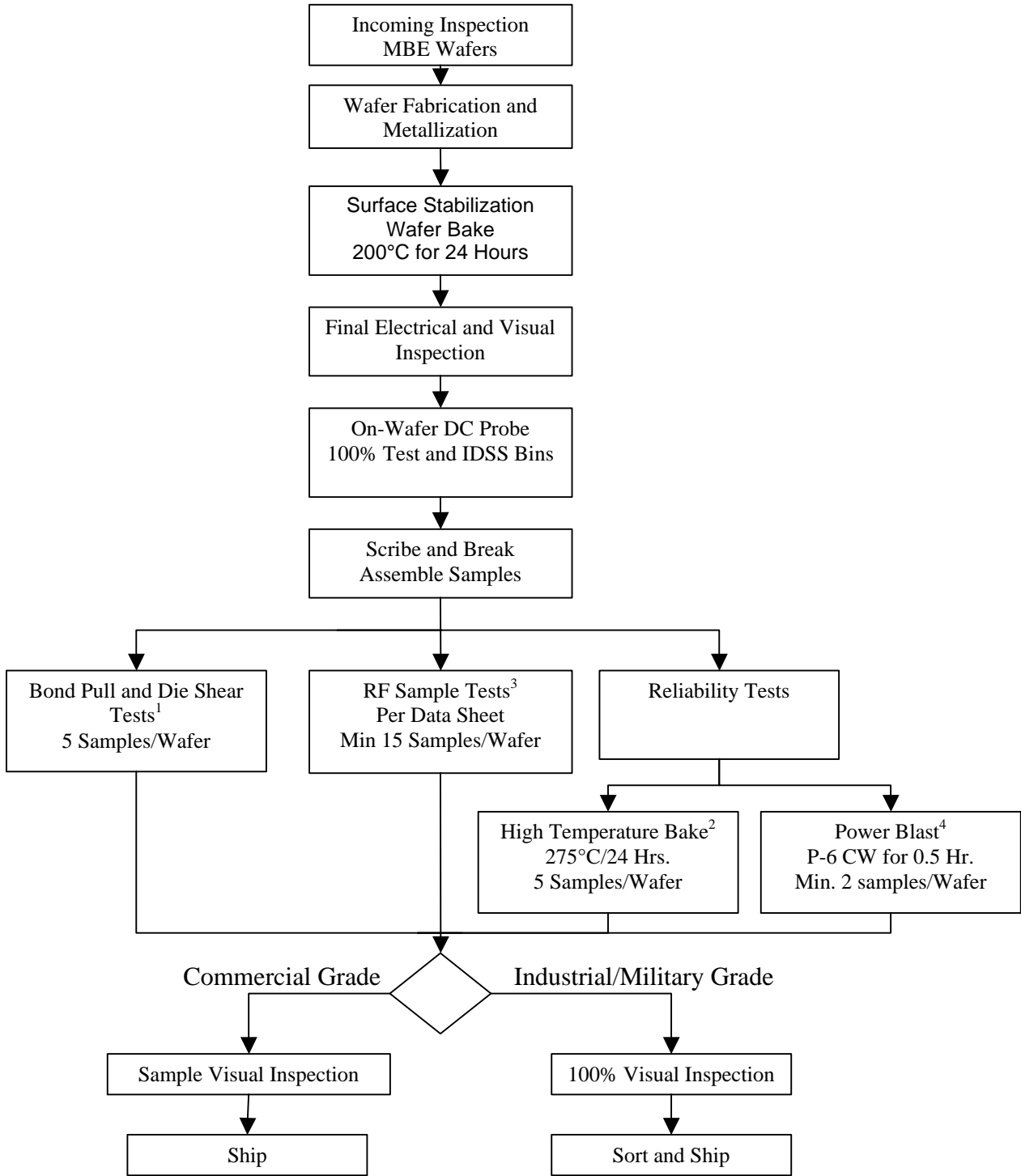


# WAFER QUALIFICATION PROCEDURE

(MIL-PRF-19500M and MIL-STD-750 EQUIVALENT)



**NOTES:**

- 1. Accept 0 / Reject 1
- 2. Accept 1 / Reject 2
- 3. 15 Samples, Accept 3 / Reject 4
- 4. DC Parameters variation < ±15%; P-6/P-1 changes < ±0.5dBm, G-6/G-1 changes < ±0.5dB; Accept 0 / Reject 1. Also monitor POUT = P-6 CW for > 5 Hrs, with changes < ±0.75dB/dBm, and s-parameters