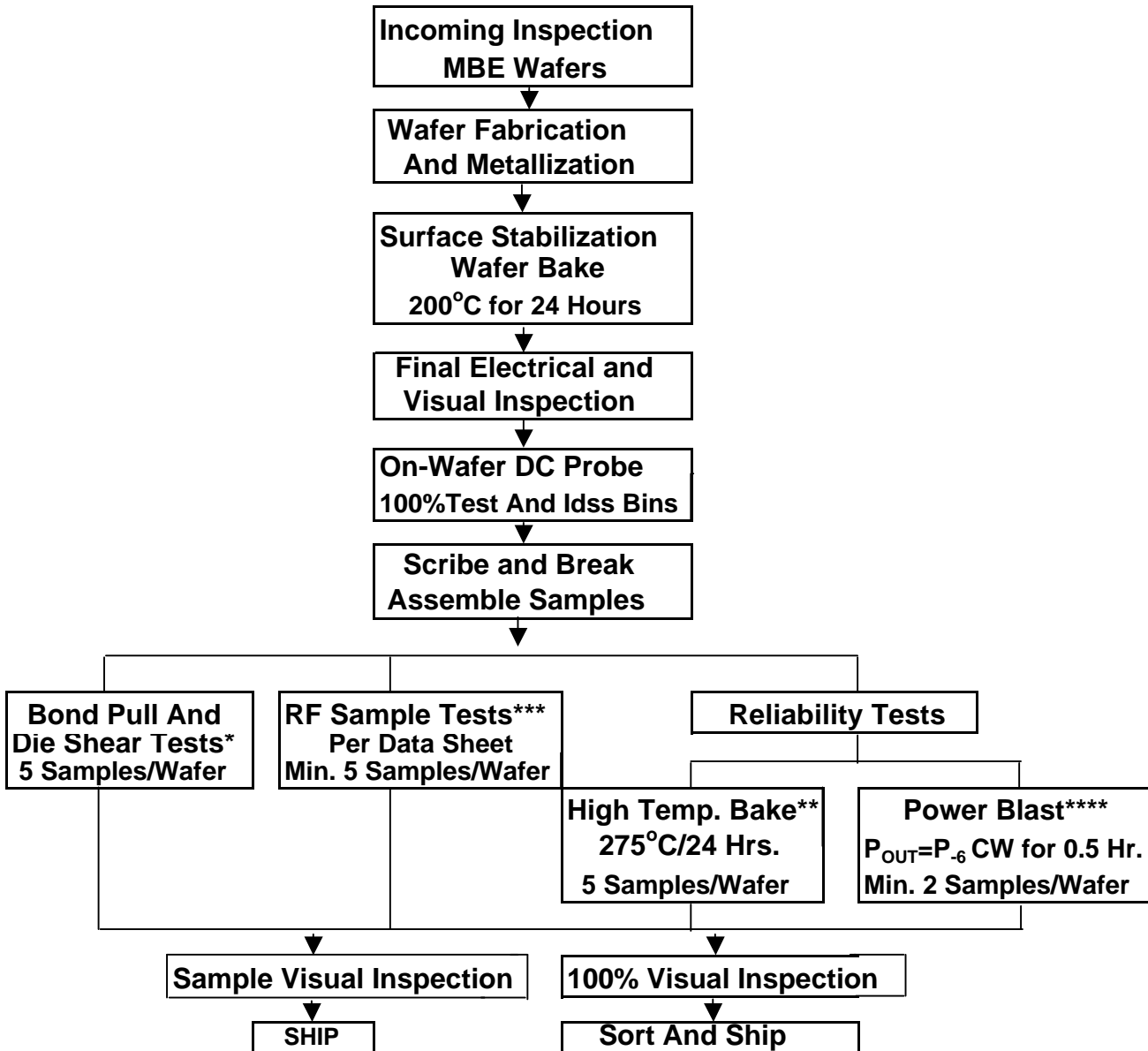


Excelics Wafer Qualification Procedure

(MIL-STD-19500, -750 equivalent)



(Commercial Grade)

Note: * : Accept 0 / Reject 1. ** : Accept 1/Reject 2.

*** : 5 Samples, Accept 1 / Reject 2 ; 10 Samples, Accept 2 / Reject 3.

**** : D.C. Parameters Variation < +/-15%; P-6/P-1 dB changes < +/-0.5 dBm,
G-6/G-1 dB changes < +/-0.5 dB; Accept 0 / Reject 1.

Also monitor $P_{OUT}=P_{-6}$ CW for >5 Hrs, with changes < +/-0.75 dB or dBm,
and S-parameters.